

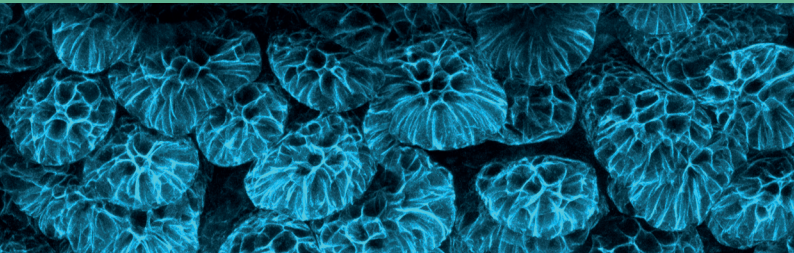


# REGENBELL SYMPOSIUM

Annual symposium organized  
by IDIBELL Regenerative Medicine  
Program (RegenBell)

---

21-22 November 2024  
Institut d'Estudis Catalans



# PROGRAM - DAY 1, THURSDAY, NOVEMBER 21

**09:00 - 09:30**     **Registration**

**09:30 - 09:40**     **Welcome: Gabriel Capellá**  
General Director, IDIBELL

## **SESSION I: Development and regeneration of definitive endoderm**

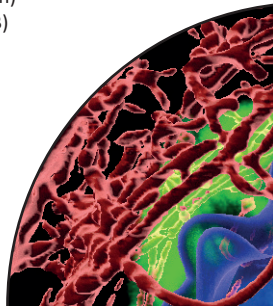
Chairs: Meritxell Rovira, IDIBELL / P-CMR[C] / UB;  
Esteban Hoijman IDIBELL / UB / CSIC

**09:45 - 10:15**     **Anne Grapin-Botton**  
Max Planck Institute for Cell Biology and  
Genetics, Dresden  
*Modeling pancreas development and disease with  
organoids*

**10:15 -10:45**     **Jordi Guiu**  
IDIBELL / P-CMR[C]  
*Mucosal macrophages govern intestinal  
regeneration in response to radiation injury*

**10:45 - 11:05**     **Selected short talks**  
Simona Chera (University of Bergen)  
Joffrey Pelletier (UB / IDIBELL / IRB)

**11:05 - 11:50**     **Coffe break**

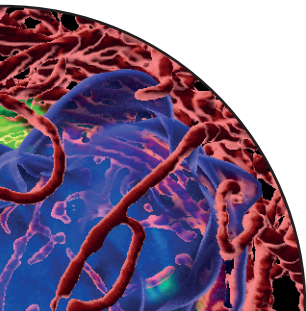


## DAY 1, THURSDAY, NOVEMBER 21

### SESSION II: Stem cell regeneration in aging and disease

Chairs: Carolina Florian, ICREA / IDIBELL / P-CMR[C];  
Alessandra Giorgetti, IDIBELL / P-CMR[C] / UB

- 11:50 - 12:20**     **Hartmut Geiger**  
Ulm University, Ulm  
*Mechanistic insights into stem cells in aging and regeneration*
- 12:20 - 12:50**     **Laëtitia Largeaud**  
Toulouse University, Toulouse  
*Impact of germline GATA2 mutations: from functional deficiency to development of myeloid neoplasms*
- 12:50 - 13:10**     **Selected short talks**  
Patricia Herrero Molinero (Hospital del Mar Research Institute)  
Joan Pera (IDIBELL / P-CMR[C])
- 13:15 - 15:15**     **Lunch & Poster Session**



**SESSION III: iPSC for disease modeling**

Chair: Anna Veiga, IDIBELL / P-CMR[C]

**15:20 - 15:50**

**Natalia Rodríguez Muela**

German Center for Neurodegenerative  
Disease, Dresden

*Human organoid models to understand selective  
neural vulnerability in neurodegenerative diseases*

**15:50 - 16:20**

**Ivana Barbaric**

Centre for Stem Cell Biology, University of  
Sheffield, Sheffield

*Culture-acquired genetic variation in human  
pluripotent stem cells: the causes and  
consequences*

**16:20 - 16:40**

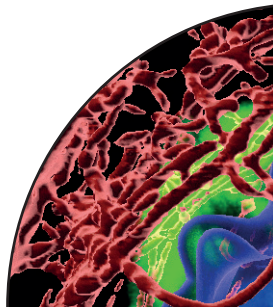
**Selected short talks**

Valentina Baruffi (UB / IDIBELL)

Alberto Ortega (UB / IDIBELL)

**16:40 - 17:20**

**Coffe break**



## DAY 1, THURSDAY, NOVEMBER 21

### SESSION IV: Manipulating collective cell behaviour

Chair: Jordi Guiu, IDIBELL / P-CMR[C]

17:25 - 17:55

**Martti Maimets**

The Novo Nordisk Foundation Center for Stem Cell Medicine (reNEW), University of Copenhagen, Copenhagen  
*Geometry-driven fetal to adult transition in the intestine*

17:55 - 18:15

**Maria Bernabeu**

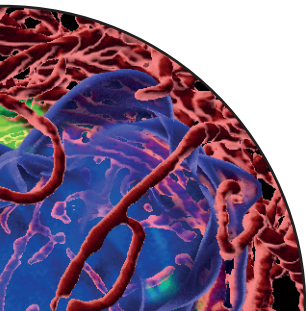
EMBL, Barcelona  
*Building barriers: developing in vitro 3D brain microvascular models to study malaria pathogenesis*

18:15 - 20:00

**Poster session**

20:00

**END OF DAY 1**



**SESSION V: Restoration of homeostasis and tissue repair**

Chair: Mireya Plass, IDIBELL / P-CMR[C]

**09:05 - 09:35**

**Salvador Aznar Benitah**

ICREA / IRB Barcelona

*Lifelong epigenetic effects of maternal diet in metabolic liver disease in progeny*

**09:35 - 10:05**

**Esteban Hoijman**

IDIBELL / CSIC

*Dynamics of epithelial protection in the live embryo*

**10:05 - 10:25**

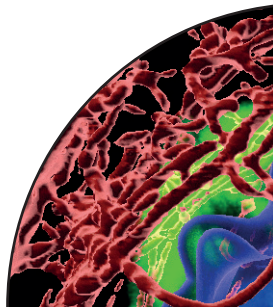
**Selected short talks**

Carlos Sebastián (UB / IBUB)

Joshua Frenster (UPF)

**10:25 - 11:00**

**Coffe break**

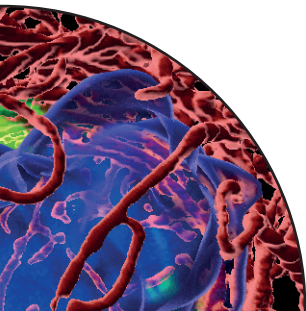


## DAY 2, FRIDAY, NOVEMBER 22

### SESSION VI: Keynote address

Chair: Angel Raya, ICREA / IDIBELL / P-CMR[C]

- 11:10 - 12:10**      **KEYNOTE SPEAKER: Didier Stainier**  
Max Planck Institute for Heart and Lung Research, Bad Nauheim  
*Adult heart regeneration in zebrafish, and genetic compensation*
- 12:10 - 13:00**      **Symposium awards and concluding remarks**  
Angel Raya ICREA, IDIBELL / P-CMR[C]
- 13:00**                **END OF SYMPOSIUM**



Sponsored by



**BGI**

The logo for BGI consists of the letters "BGI" in a bold, blue, sans-serif font. The letters are slightly shadowed, giving them a three-dimensional appearance as if they are floating above a white surface.

**Cultek**

The logo for Cultek features a red icon on the left, which is a stylized representation of a DNA double helix or a similar molecular structure. To the right of the icon, the word "Cultek" is written in a bold, red, sans-serif font.

**BioLab**

The logo for BioLab features a red icon on the left, which is a stylized representation of a DNA double helix or a similar molecular structure. To the right of the icon, the word "BioLab" is written in a bold, blue, sans-serif font.



Supported by



**P-CMR[C]**

